



Waterfit 
A Thomas Dudley Company

MAY 2019

**WATER INDUSTRY
STANDARD PRODUCTS
CATALOGUE**

WELCOME

Waterfit is a major manufacturer of gunmetal fittings and water meter manifolds to the UK water industry as well as being the manufacturer of choice in many international markets around the world. Building on the expertise and capabilities underpinning our standard products, Waterfit has become the destination of choice for water industry OEMs looking for innovative bespoke products to complement their own ranges. Naturally, Waterfit’s UK operations are backed by full accreditation to **BS EN ISO 9001:2015** and **BS EN ISO 14001:2015** to ensure both our quality and environmental performance is second to none.



STANDARD PRODUCT RANGES

- Water boundary boxes and internal metering products
- Gunmetal ferrule and saddle straps
- Gunmetal single and multiport manifolds
- Gunmetal stopcocks to BS 5433



UK SERVICE AND QUALITY

- High quality comprehensively tested products
- Fast and flexible service with UPS next day delivery available
- Fittings to BS and WIS standards
- WRAS approval



INNOVATION

- CAD/CAM 3D modelling
- Rapid prototyping
- Finite Element Analysis (FEA) and Computational Fluid Dynamics (CFD)
- WRAS approved testing on site



THE SECURE CHOICE

- Waterfit has UK history back to 1951
- Part of Thomas Dudley Group manufacturing since 2005
- 14 acre manufacturing site
- Foundry and plastic moulding on site

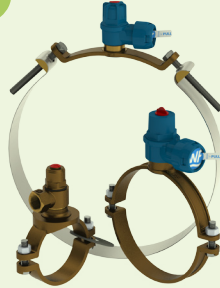


CONTENTS

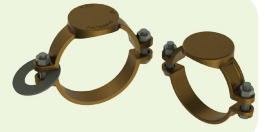
6 MULTIFIT™



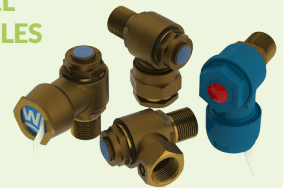
8 SELF-TAPPING FERRULE STRAPS



9 BLANK SADDLE STRAPS



10 SWIVEL FERRULES



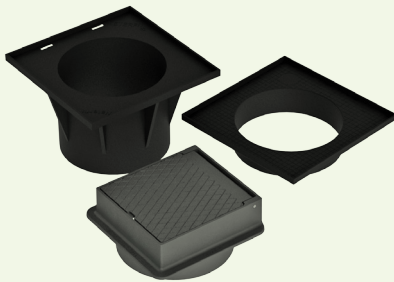
12 FLEXIFIT® BOUNDARY BOX



14 METERFIT™ BOUNDARY BOX



20 SURFACE BOXES AND TOP HATS



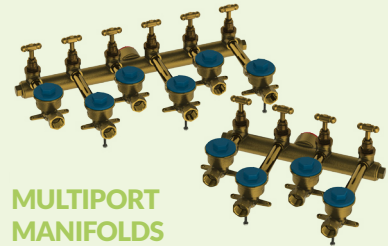
22 METERFIT™ RAISER



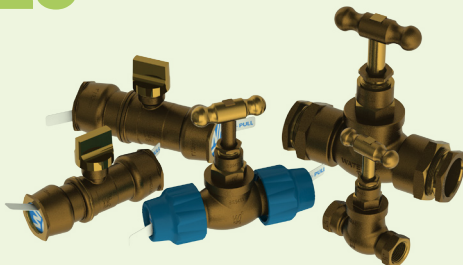
23 METER CARRIERS



24 MULTI-PORT MANIFOLDS



26 BS5433 STOPCOCKS AND VALVES



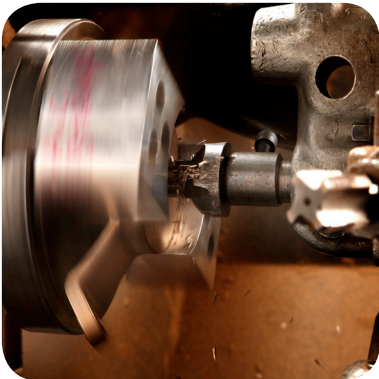
29 BSP THREADED / COMPRESSION FITTINGS

UNION JOINTS
ADAPTORS
CONNECTORS
ELBOWS
BUSHES
NIPPLES
PLUGS
SOCKETS
TEES



33 ANCILLARY FOR GUNMETAL PRODUCTS

34 ANCILLARY FOR METERING PRODUCTS

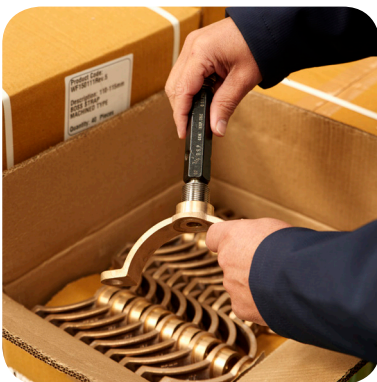


EMINENT HISTORY

At Waterfit, we provide the water industry with a uniquely flexible source of supply for high quality gunmetal and plastic fittings.

A member of the award-winning and financially robust Thomas Dudley Group since 2005, Waterfit has unrivalled expertise in designing, manufacturing and assembling ferrules, ferrule straps, meter carriers and manifolds, stopcocks, pushfit spherical valves, compression and threaded fittings.

With a history dating back to 1951 and born out of the Qualis foundry, Waterfit has a long established reputation for quality and reliability. What's more, our ability to work in partnership with water companies and OEMs to develop new products tailored around individual customer requirements sets us apart within the market.



FUTURE OF INNOVATION

Our commitment to investing in technology has equipped our 14 acre manufacturing site with state of the art foundry and moulding capabilities, the latest CAD/CAM modelling and metallic prototyping / 3D printing capabilities. Finite Element Analysis (FEA) and Computational Fluid Dynamics (CFD) meanwhile ensure that we are able to optimise both component integrity and hydraulic performance in the products we design.

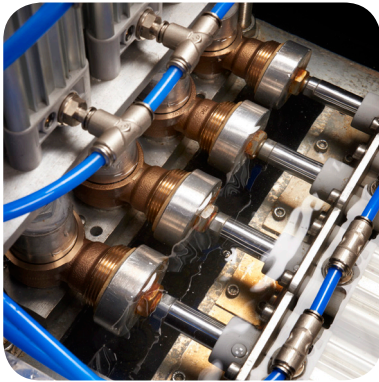
As a result of this investment, Waterfit is now the chosen partner of many large OEM manufacturers who seek to complement their own ranges with products designed to meet their needs by Waterfit's conveniently located project team. New designs are cost effectively manufactured using the palette of 7 manufacturing competencies at Waterfit's disposal to cost effectively address the highest volumes right down to single bespoke creations.



UK SERVICE AND SUPPLY

As a leading supplier to water companies, distributors, merchants and contractors across the UK, Waterfit understands the importance of having a robust supply chain. Our network of carefully selected partners allows us to achieve the perfect combination of quality, value for money and security of supply.

Waterfit is vastly experienced in servicing framework agreements and many fittings can be delivered from stock to support shorter term demand. Our international markets are efficiently supplied via trusted distribution partners.



STANDARDS AND QUALITY

Furthermore, when customers order from us they do so knowing that we are a quality assured organisation. We have attained certification in BS EN ISO 9001 and 14001 and Six Sigma and lean manufacturing methodologies are employed throughout the business along with specialist in-house metallurgical testing.

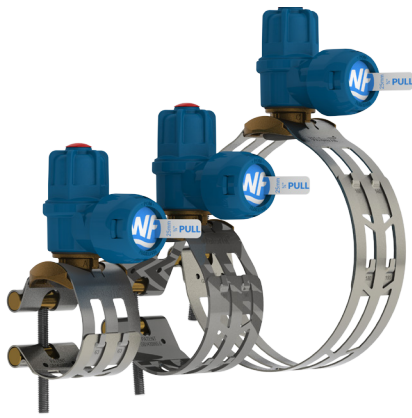
In addition, Waterfit products are engineered to the highest industry standards and deliver assured strength, durability, and performance. Our metering and boundary box ranges are all fully WRAS approved and we insist on using the highest grade WRAS accredited materials in order to comply with BS 6920. Where appropriate Waterfit products are also Water Industry Specifications (WIS) compliant.



SUPPORTING INTERNATIONAL CUSTOMERS

Waterfit have a proud heritage of providing high quality gunmetal products to service water distribution networks in numerous countries around the globe. The fittings range covers a broad spectrum, from trusted gunmetal products contained within our catalogue to specialist products requiring bespoke items, produced in house.

A core belief that well established quality products allied to innovation, have helped to strengthen our position as a preferred supplier in many regions throughout the world. Our lean manufacturing and assembly processes allied to enviable in house testing facilities are instrumental in maintaining the high quality of the Waterfit range and provide added confidence to our customers, when specifying our products.

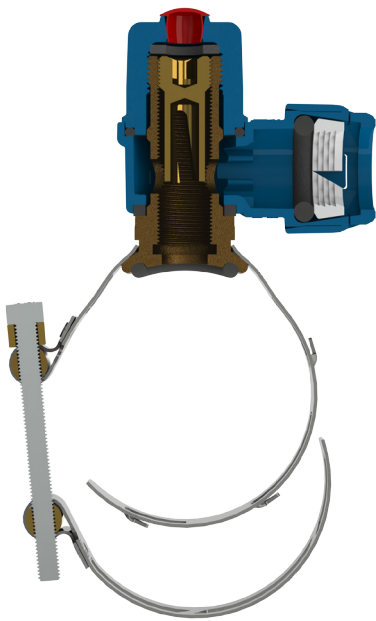


MULTIFIT™

The Multifit™ is an evolution of the traditional gunmetal ferrule strap, boasting an extensive range of sizes covered by a single strap, with a unique patent protected safe and tidy underlapping design.

Ensuring the boss area remains the same as the gunmetal ferrule straps means that all elements that come into contact with drinking water are *fully compliant with WIS 4-22-02*, providing security and peace of mind from the proven design.

Featuring a number of benefits for installers, buyers and asset owners alike, this innovative ferrule strap is a perfect upgrade to the existing range of products.



INSTALLERS

75% OF CONNECTIONS WITH SINGLE STRAP

Coverage for 90-125mm using 1 strap, accommodating for an average of 75% of all ferrule strap installations.

30% FASTER TO FIT

1 piece rather than 6 pieces, single sided fastening, plus a further 5 features, allow for a 30% faster installation time.

MINIMAL EQUIPMENT REQUIRED

Tap a pipe with just the strap, a 13mm socket and a standard 8mm square ferrule key, no additional equipment required

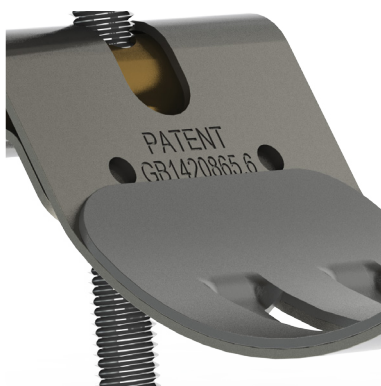
BUYERS

50% FEWER INVENTORY LINES

With 6 pipe sizes covered by just 3 straps, inventory lines are halved on the system allowing for more efficient management.

LONG ASSET LIFE

Designed for a long reliable service life, built using high quality corrosion resistant materials and all UK sourced elastomers.



ASSET OWNERS

35% BETTER HYDRAULIC PERFORMANCE

Versus other straps on the market, improved hydraulic performance helps achieve up to 3% TOTEX saving through reduced energy.

30-70% WEIGHT SAVING ON THE VAN

30% lighter than standard gunmetal straps and 70% lighter than other multi-diameter designs means less weight on the vehicle.

LOW / NO LEAD OPTIONS

Options for 4MS listed reduced lead gunmetal CC499K or a complete lead free C89833.



MULTIFIT™ FOR METRIC PE/PVC PIPE

Ferrule straps for use on metric sizes of PE and PVC pipe. Can be supplied with either acetal pushfit, gunmetal pushfit, compression, or BSP female iron outlets.

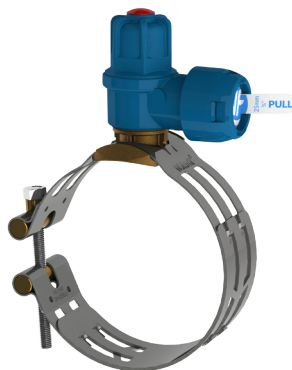
| CODE | PART |
|--|---|
| MFS063003768 | 63-75mm Multifit w/ 25mm Polymer Pushfit Outlet |
| MFS063003771 | 63-75mm Multifit w/ 25mm Gunmetal Pushfit Outlet |
| MFS090003653 | 90-110-125mm Multifit w/ 25mm Polymer Pushfit Outlet |
| MFS090003654 | 90-110-125mm Multifit w/ 32mm Polymer Pushfit Outlet |
| MFS090003690 | 90-110-125mm Multifit w/ 25mm Gunmetal Pushfit Outlet |
| MFS090003776 | 90-110-125mm Multifit w/ 32mm Gunmetal Pushfit Outlet |
| MFS160003744 | 160-180mm Multifit w/ 25mm Polymer Pushfit Outlet |
| MFS160003783 | 160-180mm Multifit w/ 32mm Polymer Pushfit Outlet |
| MFS160003608 | 160-180mm Multifit w/ 25mm Gunmetal Pushfit Outlet |
| MFS160003785 | 160-180mm Multifit w/ 32mm Gunmetal Pushfit Outlet |
| Other sizes and outlets available upon request | |



MULTIFIT™ FOR IMPERIAL PVC PIPE

Ferrule straps for use on imperial sizes of PVC pipe. Can be supplied with either acetal pushfit, gunmetal pushfit, compression, or BSP female iron outlets.

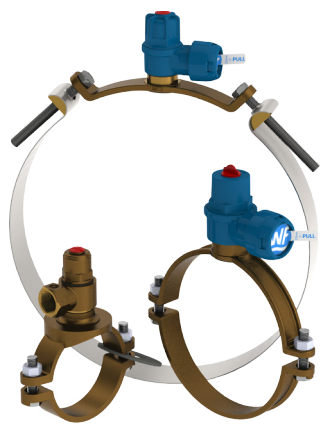
| CODE | PART |
|--|---|
| MFS110003703 | 4-5-6" Multifit w/ 25mm Polymer Pushfit Outlet |
| MFS110003778 | 4-5-6" Multifit w/ 32mm Polymer Pushfit Outlet |
| MFS110003657 | 4-5-6" Multifit w/ 25mm Gunmetal Pushfit Outlet |
| MFS110003780 | 4-5-6" Multifit w/ 32mm Gunmetal Pushfit Outlet |
| Other sizes and outlets available upon request | |



MULTIFIT™ FOR IMPERIAL AC PIPE

Ferrule straps for use on imperial sizes of AC pipe. Can be supplied with either acetal pushfit, gunmetal pushfit, compression, or BSP female iron outlets.

| CODE | PART |
|--|--|
| MFS34X004024 | 3-4" AC Multifit w/ 25mm Polymer Pushfit Outlet |
| MFS456004018 | 4-5-6" AC Multifit w/ 25mm Polymer Pushfit Outlet |
| MFS456003989 | 4-5-6" AC Multifit w/ 32mm Gunmetal Pushfit Outlet |
| Other sizes and outlets available upon request | |



SELF-TAPPING FERRULE STRAPS

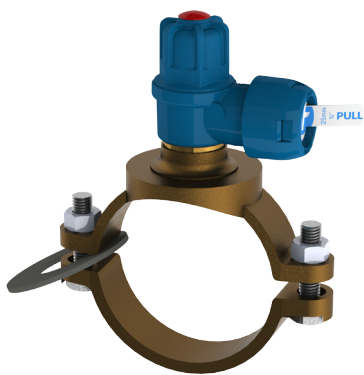
- Enable 20mm, 25mm or 32mm service pipes to be taken off a water main
- ½", ¾" or 1" female connections available to allow fitting of adaptor to connect to most types of pipe
- Supplied with European grade stainless steel nuts and bolts plus either an EPDM or Nitrile O-ring (Nitrile flat washer for AC version)
- Housed inside a ferrule and shielded by a protective cap, the self tapping cutter removes the need for a drilling machine
- Only tools required are a spanner and standard ferrule key
- Conform to *WIS 4-22-02*



FERRULE STRAPS FOR PE/PVC PIPE

Ferrule straps for use on PE or PVC pipe. Can be supplied with either acetal pushfit, gunmetal pushfit, compression, or BSP female iron outlets.

| CODE | PART |
|--|--|
| FSM063000203 | 63mm PE S/T Ferrule Strap x 25mm Polymer Pushfit Outlet C/W Liner |
| FSM090000155 | 90mm PE S/T Ferrule Strap x 25mm Polymer Pushfit Outlet C/W Liner |
| FSM110000097 | 110mm PE S/T Ferrule Strap x 25mm Polymer Pushfit Outlet C/W Liner |
| FSM125000107 | 125mm PE S/T Ferrule Strap x 25mm Polymer Pushfit Outlet C/W Liner |
| FSM160002211 | 160mm PE S/T Ferrule Strap x 25mm Polymer Pushfit Outlet C/W Liner |
| FSM180000125 | 180mm PE S/T Ferrule Strap x 25mm Polymer Pushfit Outlet C/W Liner |
| FSI004000173 | 4" PVC S/T Ferrule Strap x 25mm Polymer Pushfit Outlet C/W Liner |
| FSI005002517 | 5" PVC S/T Ferrule Strap x 25mm Polymer Pushfit Outlet C/W Liner |
| FSI006000189 | 6" PVC S/T Ferrule Strap x 25mm Polymer Pushfit Outlet C/W Liner |
| Other sizes and outlets available upon request | |



FERRULE STRAPS FOR AC PIPE

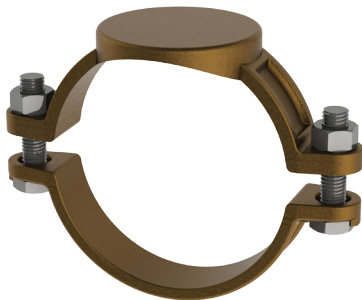
Ferrule straps for use on AC pipe. Can be supplied with either acetal pushfit, gunmetal pushfit, compression, or BSP female iron outlets.

| CODE | PART |
|--|---|
| FSI002000228 | 2" AC S/T Ferrule Strap x 25mm Polymer Pushfit Outlet C/W Liner |
| FSI003000231 | 3" AC S/T Ferrule Strap x 25mm Polymer Pushfit Outlet C/W Liner |
| FSI004000233 | 4" AC S/T Ferrule Strap x 25mm Polymer Pushfit Outlet C/W Liner |
| FSI005002307 | 5" AC S/T Ferrule Strap x 25mm Polymer Pushfit Outlet C/W Liner |
| FSI006000240 | 6" AC S/T Ferrule Strap x 25mm Polymer Pushfit Outlet C/W Liner |
| FSI003000960 | 3" AC S/T Ferrule Strap x ¾" BSP Female Iron Outlet |
| FSI004000935 | 4" AC S/T Ferrule Strap x ¾" BSP Female Iron Outlet |
| Other sizes and outlets available upon request | |



BLANK SADDLE STRAPS

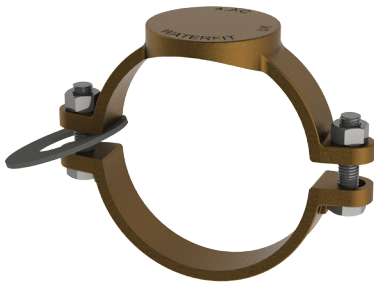
- Used when the strength of the mains pipe would not otherwise support a ferrule joint
- Supplied with 3" boss as standard with 3½" boss optional to allow the ferrule to be fitted under pressure using a tapping machine
- Can be supplied with the boss already drilled to size and if necessary fitted with a ferrule
- Supplied with stainless steel nuts and bolts together



BLANK SADDLE STRAPS FOR PVC/DI PIPE

Blank saddle straps for use on PVC or DI mains pipe featuring nitrile O-ring.

| CODE | PART |
|---|---|
| SSM100000778 | 4" (100DN) DI Saddle Strap Set, GM, 3" Boss, Undrilled |
| SSM150001099 | 6" (150DN) DI Saddle Strap Set, GM, 3" Boss, Undrilled |
| SSM200000547 | 8" (200DN) DI Saddle Strap Set, GM, 3" Boss, Undrilled |
| SSM300001101 | 12" (300DN) DI Saddle Strap Set, GM, 3" Boss, Undrilled |
| Other sizes and thread tapping available upon request | |



BLANK SADDLE STRAPS FOR AC PIPE

Blank saddle straps for use on asbestos cement (AC) mains pipe featuring flat nitrile washer.

| CODE | PART |
|---|---|
| SSI002003471 | 2" AC Saddle Strap Set, GM, Undrilled |
| SSI005000767 | 5" AC Saddle Strap Set, GM, Undrilled |
| SSI002003609 | 2" AC Saddle Strap Set, GM, Drilled & Tapped ¾" BSP |
| Other sizes and thread tapping available upon request | |



SWIVEL FERRULES

- The ferrule is fitted with a threaded inner plug, which enables water flow to be controlled using a square ended key
- Features 360° swivel banjo, allowing for easy positioning, with options of pushfit, compression, or BSP threaded outlets
- Can be tapped directly into cast iron, ductile iron, and steel pipes
- Can be supplied with a saddle boss strap for connection to PE, PVC, or AC pipes
- Long lasting proven design featuring complete corrosion resistance in fully gunmetal products
- *Conforms to WIS 4-22-02*



POLYMER PUSHFIT FERRULES

Ferrules with a BSPT male inlet thread and a polymer banjo featuring pushfit components to make a secure connection to MDPE pipe.
Working pressure 16bar.

| CODE | PART |
|--------------|-----------------------------------|
| FEI050002162 | ½" x 20mm Polymer Pushfit Ferrule |
| FEI050000025 | ½" x 25mm Polymer Pushfit Ferrule |
| FEI075000071 | ¾" x 25mm Polymer Pushfit Ferrule |
| FEI100002511 | 1" x 32mm Polymer Pushfit Ferrule |



GUNMETAL PUSHFIT FERRULES

Ferrules with a BSPT male inlet thread and a gunmetal banjo featuring pushfit components to make a secure connection to MDPE pipe.
Working pressure 16bar.

| CODE | PART |
|--------------|------------------------------------|
| FEI050002995 | ½" x 20mm Gunmetal Pushfit Ferrule |
| FEI075002996 | ½" x 25mm Gunmetal Pushfit Ferrule |
| FEI075003460 | ¾" x 25mm Gunmetal Pushfit Ferrule |
| FEI100002997 | 1" x 32mm Gunmetal Pushfit Ferrule |



FEMALE IRON FERRULES

Ferrules with a BSPT male inlet thread and a female iron banjo with BSP female outlet to make a connection to a BSP male thread.
Working pressure 16bar.

| CODE | PART |
|--------------|-------------------------------|
| FEI050002944 | ½" x ½" Female Iron Ferrule |
| FEI075000051 | ¾" x ¾" Female Iron Ferrule |
| FEI100000043 | 1" x 1" Female Iron Ferrule |
| FEI150000048 | 1½" x 1½" Female Iron Ferrule |
| FEI150003031 | 1½" x 2" Female Iron Ferrule |
| FEI200000069 | 2" x 2" Female Iron Ferrule |



COMPRESSION FERRULES

Ferrules with a BSPT male inlet thread and a gunmetal banjo featuring compression components to make a secure connection to LDPE/HDPE/MDPE pipe.
Working pressure 16bar.

| CODE | PART |
|--------------|-------------------------------------|
| FEI050003156 | ½" x 20mm MDPE Compression Ferrule |
| FEI075003121 | ¾" x 25mm MDPE Compression Ferrule |
| FEI100003157 | 1" x 32mm MDPE Compression Ferrule |
| FEI150000059 | 1½" x 50mm MDPE Compression Ferrule |
| FEI150000057 | 1½" x 63mm MDPE Compression Ferrule |
| FEM063000060 | 2" x 63mm MDPE Compression Ferrule |



SCREWDOWN FERRULES

Ferrules are also available with a spindle in place of a plug to allow for easier shutting off of water.
Available sizes as per standard ferrules.
Working pressure 16bar.

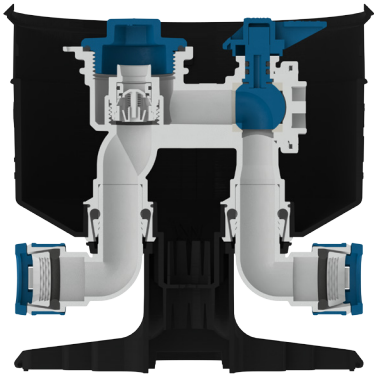
| CODE | PART |
|--------------|-------------------------------------|
| FEI050000077 | ½" x 20mm MDPE Compression Ferrule |
| FEI075000082 | ¾" x 25mm MDPE Compression Ferrule |
| FEI100000073 | 1" x 32mm MDPE Compression Ferrule |
| FEI150000079 | 1½" x 50mm MDPE Compression Ferrule |
| FEI200000260 | 2" x 63mm MDPE Compression Ferrule |



FLEXIFIT®

From the heart of innovation at Waterfit, comes the Flexifit® boundary box. Featuring a multitude of fully flexible outlets, all configurable on site, it is the only boundary box you will need for any situation.

Conforms to *BS 5834-1*.



INSTALLERS

8 BOXES IN 1 - CONFIGURE ON SITE

Flexifit® is supplied in component form, allowing for outlets to be adapted on site to suit each installations requirements.

50% SAVING ON CHALLENGING INSTALLS

Outlets are adjustable to 180° to allow for easy relocation of the manifold in tight spots, resulting in less connections required, saving up to 50% per install.

BUYERS

30% FEWER FITTINGS REQUIRED

In a non-standard installation, using Flexifit® reduces additional fittings usage by an average of 30%.

SAVE 70% ON STOCK OUTLAY

The Flexifit® can be supplied as a kit of base and various types of outlets separately and configured on site, meaning less stock holding of large components.

100% UK MANUFACTURED AND TESTED

Manufactured and assembled in the West Midlands, allowing swift response to customer fluctuations, with full testing.



ASSET OWNERS

UP TO 43% LESS JOINTS TO LEAK

Less joints through fewer fittings required during challenging installs, ensures reduced number of joints that can leak during the lifespan of the product.

FIRST SELF DRAINING BOX

An innovative alternative to sealed boxes; Flexifit® features an optional self draining valve allowing surface water ingress to exit the boundary box.

100% RECYCLED GUARD TUBE

Our award winning guard tube is environmentally friend, and pure white to allow for 400% better visibility for accurate meter readings.



| CODE | PART |
|--------------|---|
| FFM800003565 | 25mm Pushfit c/w 800mm Rigid Tube |
| FFM750003458 | 25mm Pushfit c/w 450-750mm Telescopic Tube |
| FFM800003564 | 25mm MDPE Moulded Tails c/w 800mm Rigid Tube |
| On Request | 25mm MDPE Moulded Tails c/w 450-750mm Telescopic Tube |
| On Request | 25mm MDPE Swept Tails c/w 800mm Rigid Tube |
| On Request | 25mm MDPE Swept Tails c/w 450-750mm Telescopic Tube |

MODULAR FLEXIFIT®

Flexifit® can be purchased in component form and is fully configurable on-site for any situation - 25mm Pushfit for straight connection to 25mm MDPE pipe, or 25mm MDPE to adapt to any connector, with other sizes in the pipeline. Rigid or telescopic on the same box. With any lid on top. There are currently 18 different configurations with just 1 box.



25MM TRULOCK® OUTLETS

- Standard 25mm pushfit outlets, using Waterfit's patented three part gripping compact Trulock® design, fully tested to WIS 4-32-11 requirements.
- Intended for fitting straight to 25mm MDPE pipe.

25MM MDPE OUTLETS (MOULDED)

- Injection moulded MDPE tails are a perfect 90°, with a fully integrated liner to ensure the best fit in the Flexifit® boundary box.
- Intended for use when it is required to fit to alternative pipes using an adaptor.

25MM MDPE OUTLETS (SWEPT)

- Swept MDPE tails ensure compatibility with leak detection devices.
- Intended for use when it is required to fit to alternative pipes using an adaptor.

ASK US ABOUT

- 32mm Trulock® Outlet
- Female Iron Outlet
- Male Iron Outlet

| CODE | PART |
|--------------|---|
| FFM025003450 | 25mm Flexifit® Base Unit |
| FFO025003452 | 25mm Trulock® Outlets |
| FFO025003453 | 25mm MDPE Outlets (Moulded) |
| FFO025003748 | 25mm MDPE Outlets (Swept) |
| TUM800002428 | 800mm Rigid Tube |
| TUT750003457 | 450-750mm Telescopic Tube for Flexifit |
| TUT750003576 | 450-750mm Telescopic Tube for Flexifit (Ductile Iron Lid Version) |
| TUT500003577 | 250-450mm Telescopic Tube for Flexifit |
| TUT500003575 | 250-450mm Telescopic Tube for Flexifit (Ductile Iron Lid Version) |
| LID000003472 | Snap Shut Polymer Surface Box |
| LID000003473 | Lockable Polymer Surface Box |
| THL000002460 | Combi Lid - Badged "WATER" |
| THL000000592 | Combi Lid - Badged "UISCE" |
| SURBOX002708 | Thomas Dudley Ductile Iron Surface Spigot Box (TDL 6150/180) |
| SURBOX003568 | Thomas Dudley Ductile Iron Surface Box (TDL 6153/190) |
| THM200000927 | Standard Top Hat |
| THM200002544 | Shallow Top Hat |

LID (PAGE 20)

+

TUBE (PAGE 18)

+

BASE UNIT

+

OUTLETS

=

BOUNDARY BOX



METERFIT™

For shallower installations, the Meterfit boundary box is the perfect option.

Conforms to *BS 5834-1*.

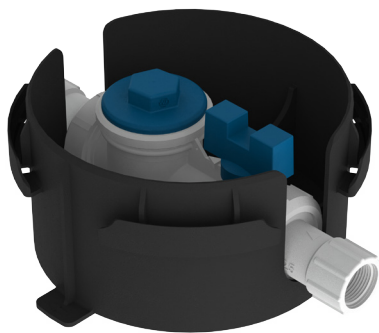


INSTALLERS

ACETAL BODY
Reinforced with acetal material, the updated Meterfit provides confidence for installers.

CLOCKWISE QUARTER TURN BALL VALVE
User friendly positive shut off valve combines ease of use and improved head loss.

HIGH QUALITY SEALS
Ball seals are manufactured using ultra high performance DuPont Hytrel material, ensuring a long life with reduced need to replace during the products lifespan.

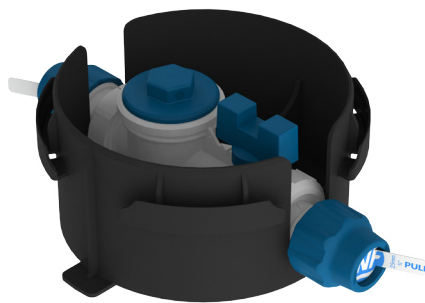


BUYERS

PROVEN QUALITY
The Meterfit has been supplied for over 25 years so has been fully tried and tested in the field.

100% FACTORY TESTED
Each manifold is 100% tested on-site to ensure a quality product is delivered with no issues at the point of installation.

100% UK MANUFACTURED
Manufactured and assembled in the West Midlands, allowing swift response to customer fluctuations, with the added benefit of a reduced carbon footprint.



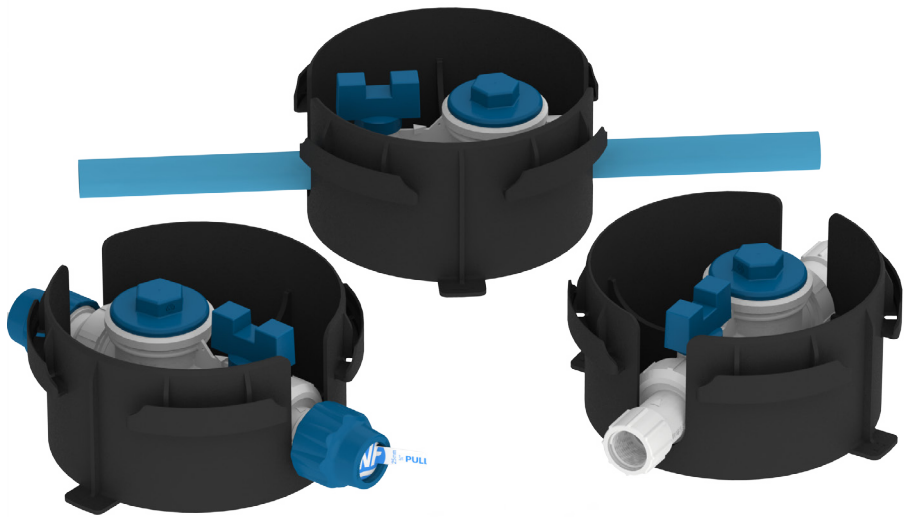
ASSET OWNERS

LEAK-FREE SINGLE PIECE MANIFOLD
The robust single piece manifold ensures reduced leak paths, providing confidence in a long asset life.

O-RING REASSURANCE
Outlets are fitted with a double O-ring seal, reassuring the product will not leak.

FULLY CAPTIVE CHECK VALVE
The check valve is reinforced with a bush that means there is no risk of the valve coming loose into the service pipe.

100% RECYCLED GUARD TUBE
Our award winning guard tube is environmentally friendly, and pure white to allow for 400% better visibility for accurate meter readings.



25MM PUSHFIT OUTLETS

- Standard 25mm pushfit outlets, complete with liner, the best option for new connections.

25MM MDPE OUTLETS

- 150mm length moulded 25mm MDPE (BS 12201-2:2011) outlets, intended for use with pushfit adaptors for connection to non-25mm MDPE pipe.

¾" FEMALE IRON OUTLETS

- ¾" BSP female iron connections intended for use with male iron adaptors for connection to any number of pipes.

½" IRISH HEAVY GAUGE PUSHFIT OUTLETS

- Standard pushfit outlets used for direct connection to ½" Irish Heavy Gauge pipe (I.S. 135).

| CODE | PART |
|---------------|--|
| MK7000003054 | 25mm Pushfit c/w Base |
| MK7800003055 | 25mm Pushfit c/w Base & 800mm Rigid Tube |
| MK7800002893 | 25mm Pushfit c/w Base, 800mm Rigid Tube & Combi Surface Box |
| MK7800003622 | 25mm Pushfit c/w Base, 800mm Rigid Tube & Plastic Lid |
| MK7750003571 | 25mm Pushfit c/w Base & 450-750mm Telescopic Tube |
| MK7750003570 | 25mm Pushfit c/w Base, 450-750mm Tele Tube & Combi Surface Box |
| MK7000003003 | 25mm MDPE Tails c/w Base |
| MK7800003275* | 25mm MDPE Tails c/w Base & 800mm Rigid Tube |
| MK7750003529 | 25mm MDPE Tails c/w Base & 450-750mm Telescopic Tube |
| MK7000003244 | ¾" Female Iron c/w Base |
| MK7800002875 | ¾" Female Iron c/w Base & 800mm Rigid Tube |
| MK7750003681* | ¾" Female Iron c/w Base & 450-750mm Telescopic Tube |

LID (PAGE 20)

+

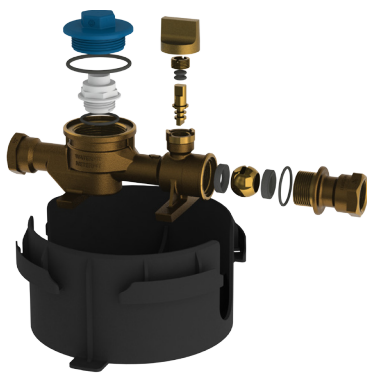
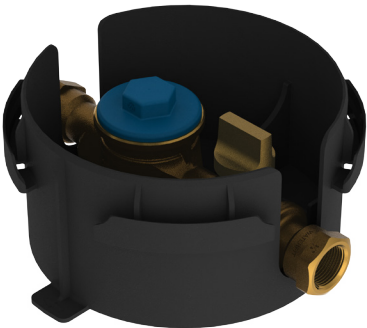
TUBE (PAGE 18)

+

BASE UNIT

=

BOUNDARY BOX



1½” GM METERFIT™

Similar to the Meterfit but with a gunmetal manifold, making it more suitable for contaminated land sites.

Conforms to BS 5834-1.



INSTALLERS

GUNMETAL BODY

Corrosion resistant material ensures the this boundary box is suitable for contaminated ground.

CLOCKWISE QUARTER TURN BALL VALVE

User friendly positive shut off valve combines ease of use and improved head loss.

BUYERS

PROVEN QUALITY

The GM Meterfit™ has been supplied for over 25 years so has been fully tried and tested in the field.

100% FACTORY TESTED

Each manifold is 100% tested on-site to ensure a quality product is delivered with no issues at the point of installation.

ASSET OWNERS

LEAK-FREE SINGLE PIECE MANIFOLD

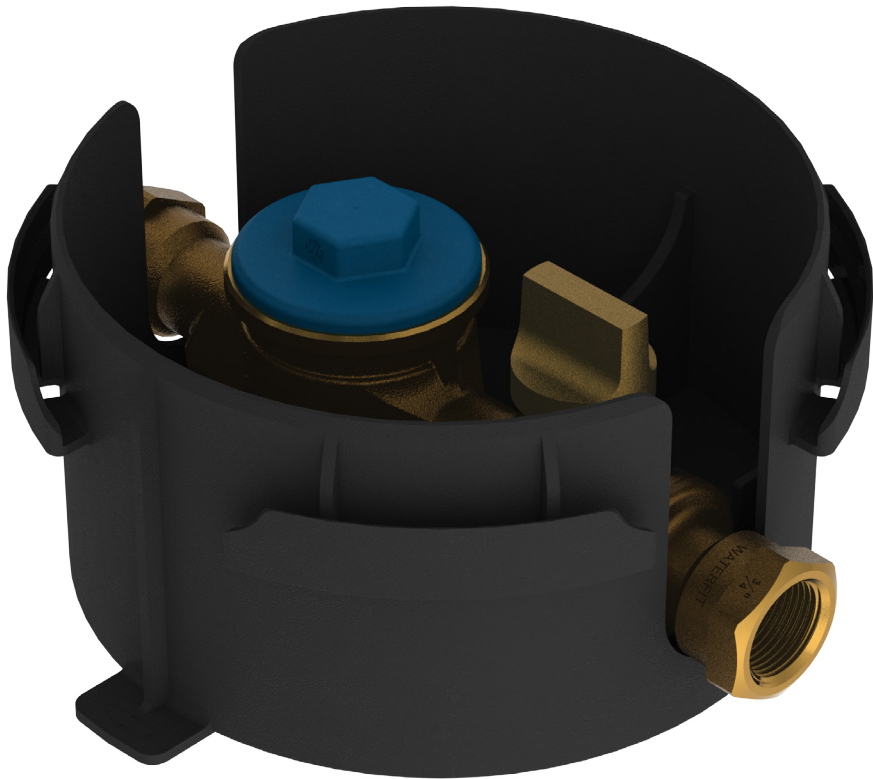
The robust single piece manifold ensures reduced leak paths, providing confidence in a long asset life.

FULLY CAPTIVE CHECK VALVE

The check valve is reinforced with a bush that means there is no risk of the valve coming loose into the service pipe.

100% RECYCLED GUARD TUBE

Our award winning guard tube is environmentally friendly, and pure white to allow for 400% better visibility for accurate meter readings.



3/4" FEMALE IRON OUTLETS

- 3/4" BSP female iron connections intended for use with male iron adaptors for connection to any number of pipes.

| CODE | PART |
|--------------|--|
| SACAXX003314 | 3/4" GM Female Iron c/w Base |
| MK8800002735 | 3/4" GM Female Iron c/w Base & 800mm Rigid Tube |
| MK8750003383 | 3/4" GM Female Iron c/w Base & 800mm Rigid Tube (DZR Pressure Cap) |
| MK8800003415 | 3/4" GM Female Iron c/w Base, 800mm Rigid Tube & Cast Iron Surface Box |
| MK8800002897 | 3/4" GM Female Iron c/w Base, 800mm Rigid Tube & Combi Surface Box |
| MK8750003383 | 3/4" GM Female Iron c/w Base & 450-750mm Telescopic Tube |
| MK8750003672 | 3/4" GM Female Iron c/w Base, 450-750mm Tele Tube & Combi Surface Box |

LID (PAGE 20)

+

TUBE (PAGE 18)

+

BASE UNIT

=

BOUNDARY BOX



2” GM METERFIT™

As per 1½” GM Meterfit, but features a large aperture to fit a 2” water meter, with 1” BSP outlets.

Conforms to *BS 5834-1*.

INSTALLERS

GUNMETAL BODY

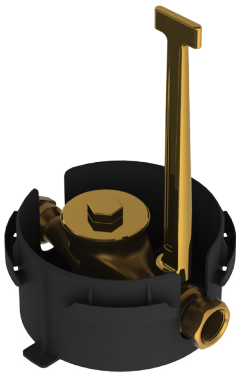
Corrosion resistant material ensures the this boundary box is suitable for contaminated ground.

CLOCKWISE QUARTER TURN BALL VALVE

User friendly positive shut off valve combines ease of use and improved head loss.

COMPACT 2” BOUNDARY BOX

The manifold is able to fit inside a standard 200mm tube.



BUYERS

PROVEN QUALITY

The GM Meterfit™ has been supplied for over 25 years so has been fully tried and tested in the field.

100% FACTORY TESTED

Each manifold is 100% tested on-site to ensure a quality product is delivered with no issues at the point of installation.

ASSET OWNERS

LEAK-FREE SINGLE PIECE MANIFOLD

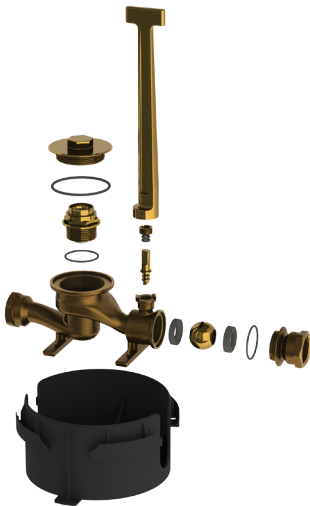
The robust single piece manifold ensures reduced leak paths, providing confidence in a long asset life.

FULLY CAPTIVE CHECK VALVE

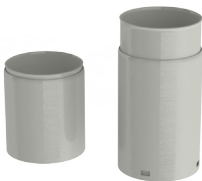
The check valve is reinforced with a bush that means there is no risk of the valve coming loose into the service pipe.

100% RECYCLED GUARD TUBE

Our award winning guard tube is environmentally friendly, and pure white to allow for 400% better visibility for accurate meter readings.



| CODE | PART |
|--------------|--|
| SACAXX003314 | 1” GM Female Iron c/w Base |
| MK8800002735 | 1” GM Female Iron c/w Base & 800mm Rigid Tube |
| MK8750003383 | 1” GM Female Iron c/w Base & 800mm Rigid Tube (DZR Pressure Cap) |
| MK8800003415 | 1” GM Female Iron c/w Base, 800mm Rigid Tube & Cast Iron Surface Box |
| MK8800002897 | 1” GM Female Iron c/w Base, 800mm Rigid Tube & Combi Surface Box |



GUARD TUBES

Waterfit offer a selection of rigid and telescopic tubes.

RIGID GUARD TUBES

BENEFITS

100% RECYCLED
Waterfit’s award winning environmentally friendly guard tubes are made from 100% recycled uPVC.

PURE WHITE
The pure white colour ensures clearer visibility of the water meter when installed below ground.

RIGID - CUT TO ANY SIZE
Tubes can be cut to any sizes required on-site on request.

| CODE | PART |
|--------------|------------------|
| TUM800002428 | 800mm Rigid Tube |

TELESCOPIC GUARD TUBES

BENEFITS

100% RECYCLED
Waterfit’s award winning environmentally friendly guard tubes are made from 100% recycled uPVC.

PURE WHITE
The pure white colour ensures clearer visibility of the water meter when installed below ground.

TELESCOPIC ADJUSTABILITY
For easy height adjustability, the patented telescopic tube can provide 300mm of adjustability when used with a Meterfit box and 400mm with Flexifit; this works even after packing due to the smaller tube being on top, with ease using the flared top.

SHALLOW INSTALLATIONS
The telescopic tube can be provided in a shorter versions which is perfect for shallow installations.

| CODE | PART |
|--------------|--|
| TUT750003457 | 450-750mm Telescopic Tube for Flexifit |
| TUT750003576 | 450-750mm Telescopic Tube for Flexifit (Cast Iron Lid Version) |
| TUT750003235 | 450-750mm Telescopic Tube for Meterfit |
| TUT750003573 | 450-750mm Telescopic Tube for Meterfit (Cast Iron Lid Version) |
| TUT500003577 | 250-450mm Telescopic Tube for Flexifit |
| TUT500003575 | 250-450mm Telescopic Tube for Flexifit (Cast Iron Lid Version) |
| TUT500003236 | 250-450mm Telescopic Tube for Meterfit |
| TUT500003574 | 250-450mm Telescopic Tube for Meterfit (Cast Iron Lid Version) |



SURFACE BOXES & TOP HATS

Waterfit offer a selection of surface boxes based on installers individual requirements, with Grades C and B options available.



POLYMER SURFACE BOX

BENEFITS

HIGH STRENGTH POLYMER
Able to withstand loads of up to 5.5 tonnes in accordance with BS 5834-2 testing, far exceeding requirements for a Grade C lid.

SEALED OR UNSEALED
Can be supplied with a lip seal to reduce water ingress within the boundary box.

LOCKABLE OPTION
Available with a snap shut fit or with a double locking mechanism which can be controlled using a key (supplied separately).
Conforms to BS 5834-2 - Grade C.

| CODE | PART |
|--------------|----------------------------------|
| LID000003472 | Snap Shut Polymer Surface Box |
| LID000003473 | Lockable Polymer Surface Box |
| LIDSEA003734 | Lip Seal for Polymer Surface Box |



METERFIT™ COMBINED TOP HAT AND LID

BENEFITS

DUCTILE IRON AND POLYMER
Combining the features of polymer and ductile iron surface boxes, with a polymer frame and ductile iron lid, this surface box is capable of bearing loads of up to 7 tonnes.

MAXIMUM ADJUSTABILITY
The integrated top hat design provides telescopic height adjustment of 180mm, with an angular adjustability of 8° on a 200mm rigid guard tube, and 15° when used with Waterfit's telescopic tube.
Conforms to BS 5834-2 - Grade C.

| CODE | PART |
|--------------|----------------------------|
| THL000002460 | Combi Lid - Badged "WATER" |
| THL000000592 | Combi Lid - Badged "UISCE" |



CAST IRON SURFACE BOX

BENEFITS GRADE B LOADING CAPACITY

The cast iron boxes conform to *BS 5834-2 - Grade B* Medium duty hinged lid. Round spigot on underside of frame to fit outside 200mm nominal bore plastic tube.

INTEGRATED SPIGOT FOR ADJUSTABILITY

With the TDL 6150 features a round spigot on underside of frame to fit outside 200mm nominal bore plastic tube, allowing for 65mm of height adjustability along with 8° angular adjustability.

TOP HAT COMPATIBLE

The TDL 6153 fits perfectly onto Waterfit Top Hats, ideal when increased adjustability is required with the standard top hat.

| CODE | PART |
|--------------|--|
| SURBOX002708 | Thomas Dudley Ductile Iron Surface Spigot Box (TDL 6150/180) |
| SURBOX003568 | Thomas Dudley Ductile Iron Surface Box (TDL 6153/190) |



TOP HATS

BENEFITS MAXIMUM ADJUSTABILITY

Standard top hat provides an increased telescopic height adjustment of 180mm, with an angular adjustability of 8° on a 200mm rigid guard tube, and 15° when used with Waterfit's telescopic tube.

GENERIC SIZE

Designed to suit polymer or ductile iron surface boxes.

SHALLOW SIZE AVAILABLE

Available in a shortened version which provides 65mm of height adjustment with the same angular adjustability as the standard version.

| CODE | PART |
|--------------|------------------|
| THM200000927 | Standard Top Hat |
| THM200002544 | Shallow Top Hat |



METERFIT™ METER RAISER

Used in deep installations to raise the water meter and allow for easier reading.

BENEFITS

IMPROVED METER ACCESS

Raises water meter by 150mm or can be joined to raise by 300 or 450mm, perfect for deep boundary box installations to ensure easy readability of the water meter.

AMR COMPATIBLE

Precision made from robust WRAS approved ABS material, this non-metallic material ideal for improving signal in AMR applications.

INNOVATIVE DESIGN

The raiser features a unique Balanced Flo™ design intended for maximum flow when a water meter is installed, meaning head loss is not effected.

EASY INSTALLATION

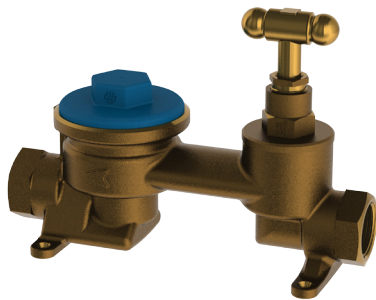
Compatible with 1½" concentric meter interfaces to **BS EN 14154-2**, featuring a retained seal which helps make installation easy and reliable.

| CODE | PART |
|--------------|--|
| RAISER002732 | Meterfit Meter Raiser |
| MK7KEY002874 | Meterfit Extended Key |
| RAISER002591 | Meterfit Meter Raiser & Extended Key (Kit) |



METER CARRIERS

- Features connection for 1½" concentric water meter to BS EN ISO 4064-4
- Suitable for use above or below ground
- Available with acetal cap conforming to BS 6920 as standard, CW602N DZR cap conforming to BS EN 12164, or dust cap
- Fully captive check valve
- 100% in-house tested



¾" FEMALE IRON METER CARRIER C/W STOPCOCK

BENEFITS 1½" CONCENTRIC WATER METER CONNECTION

Carrier for fitment of 1½" concentric water meter to BS EN ISO 4064-4. Supplied as standard with 1½" pressure cap for dwellings where a meter may not be installed straight away.

INTEGRATED STOPCOCK

A standard 1½" concentric water meter carrier with a fully integrated stopcock headworks, conforming to BS 5433.

WALL MOUNTABLE

Features 4 pre-drilled feet to allow fixing to a wall.

HIGH WORKING PRESSURE

With its gunmetal body, the stopcock carrier is WRAS approved with a working pressure of 16 bar.

| CODE | PART |
|--------------|--|
| CAI075000040 | ¾" Female Iron Meter Carrier c/w Stopcock (Polymer Pressure Cap) |
| CAI075000035 | ¾" Female Iron Meter Carrier c/w Stopcock (DZR Pressure Cap) |



¾" FEMALE IRON METER CARRIER

BENEFITS 1½" CONCENTRIC WATER METER CONNECTION

Carrier for fitment of 1½" concentric water meter to BS EN ISO 4064-4. Supplied as standard with 1½" pressure cap for dwellings where a meter may not be installed straight away.

SMALL FOOTPRINT

Minimalistic design to ensure fitment in small areas.

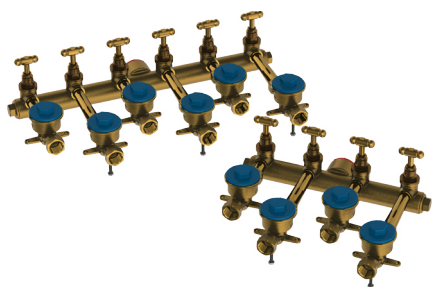
WALL MOUNTABLE

Features 2 pre-drilled feet to allow fixing to a wall.

HIGH WORKING PRESSURE

With its DZR body, the meter carrier is WRAS approved with a working pressure of 16 bar.

| CODE | PART |
|--------------|---|
| CAI075000031 | ¾" Female Iron Meter Carrier (Polymer Pressure Cap) |
| CAI075000032 | ¾" Female Iron Meter Carrier (DZR Pressure Cap) |



MULTIPORT MANIFOLDS

- Ideal when single buildings require multiple water meters or when there are a number of dwellings built close together
- All critical parts are 100% tested for leakage before assembly to ensure you receive a quality product
- Water service pipe is connected to the inlet at the back of the manifold and the water supply is channelled to each of the outlets
- Each outlet has its own stopcock headworks to allow shut off of individual feeds and meter carrier so that a 1½” concentric water meter to **BS EN ISO 4064** can be fitted
- Often connected to barrier pipe and are strongly recommended when working on a brownfield site or in contaminated ground



4 PORT MANIFOLDS

BENEFITS

4 OUTLETS FROM SINGLE FEED

Each multiport manifold is fitted with a 1½” BSP inlet that can be adapted for any pipe requirements, with 4 x ¾” BSP outlets, ideal for multiple occupancies.

1½” CONCENTRIC WATER METER CONNECTION

Each meter carrier features a connection for a 1½” concentric water meter to **BS EN ISO 4064-4**. These are supplied with 1½” pressure cap as standard for dwellings where a meter may not be installed straight away.

INTEGRATED STOPCOCK HEADWORKS

A stopcock headworks is fitted for each meter carrier, conforming to **BS 5433**, so water can be controlled for each outlet individually.

DEZINCIFICATION RESISTANT

The complete assembly is manufactured using DZR material, as such they can be installed indoors or underground, even in brownfield sites or contaminated ground.

SITS FLAT (WALL MOUNTABLE)

The carriers are fitted with feet to ensure the assembly sits flat, allowing plenty of room for adaptors to be fitted, and useful for when the manifold is mounted on a wall.

100% TESTED IN HOUSE

Every assembly is 100% pressure tested in house giving confidence you will receive a quality product.

| CODE | PART |
|--------------|---|
| MAI475000380 | 4 Way Multiport Manifold c/w ¾” Female Iron Outlets |



6 PORT MANIFOLDS

BENEFITS OF A 4 PORT MANIFOLD

1½" concentric connections, integrated stopcock headworks, DZR, sits flat.

6 OUTLETS FROM SINGLE FEED

Each multiport manifold is fitted with a 1½" BSP inlet that can be adapted for any pipe requirements, with 6 x ¾" BSP outlets, ideal for multiple occupancies.

FITS IN STANDARD PIT SECTION

Designed to fit perfectly inside a 600mm x 450mm pit section.

100% TESTED IN HOUSE

Every assembly is 100% pressure tested in house giving confidence you will receive a quality product.

| CODE | PART |
|--------------|---|
| MAI675000382 | 6 Way Multiport Manifold c/w ¾" Female Iron Outlets |

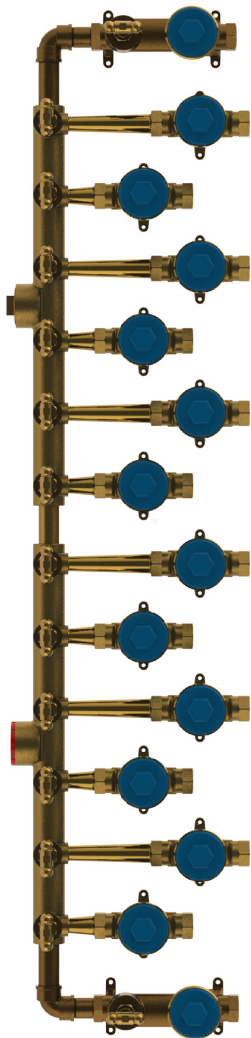
CUSTOM MULTIPORT MANIFOLDS

BENEFITS OF 4 AND 6 PORT MANIFOLDS

1½" concentric connections, integrated stopcock headworks, DZR, sits flat.

UP TO 14 OUTLETS FROM SINGLE FEED

4 and 6 port manifolds can be assembled in house along with the ¾" female iron meter carriers c/w integrated stopcock to allow for up to 14 outlets from a single feed, ideal for large flats.

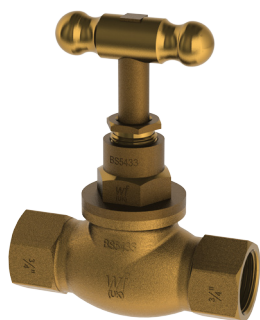


| CODE | PART |
|--------------|--|
| MAI275002587 | 2 Way Multiport Manifold c/w ¾" Female Iron Outlets |
| MAI375002588 | 3 Way Multiport Manifold c/w ¾" Female Iron Outlets |
| MAI575000381 | 5 Way Multiport Manifold c/w ¾" Female Iron Outlets |
| MAI775000383 | 7 Way Multiport Manifold c/w ¾" Female Iron Outlets |
| MAI875000384 | 8 Way Multiport Manifold c/w ¾" Female Iron Outlets |
| MAI975000959 | 9 Way Multiport Manifold c/w ¾" Female Iron Outlets |
| MAI075002185 | 10 Way Multiport Manifold c/w ¾" Female Iron Outlets |
| MAI175002186 | 11 Way Multiport Manifold c/w ¾" Female Iron Outlets |
| MAI275002542 | 12 Way Multiport Manifold c/w ¾" Female Iron Outlets |
| MAI375002543 | 13 Way Multiport Manifold c/w ¾" Female Iron Outlets |
| MAI475002510 | 14 Way Multiport Manifold c/w ¾" Female Iron Outlets |



BS 5433 STOPCOCKS & VALVES

- Enables the mains supply to be turned off in the event of an emergency or when plumbing repairs or upgrades need to be undertaken
- Designed and manufactured for use above and below ground
- Proven, robust design with **BS EN 1982** CC491K gunmetal construction allows for a long working life in the harshest of environments
- Resistant to dezincification and can be installed with confidence even in contaminated ground
- Crutch head supplied as standard and the option for square or taper heads available
- Fully conforms to **BS 5433**
- 100% tested in-house before despatch



FEMALE IRON STOPCOCKS

With all the features listed above, the female inlet and outlet joints accept male iron adaptors.

Working pressure 16bar.

| CODE | PART |
|--------------|--|
| SCI050000474 | ½" F.I. x F.I. GM Stopcock BS5433 Crutch Head |
| SCI075000489 | ¾" F.I. x F.I. GM Stopcock BS5433 Crutch Head |
| SCI100000458 | 1" F.I. x F.I. GM Stopcock BS5433 Crutch Head |
| SCI150000464 | 1½" F.I. x F.I. GM Stopcock BS5433 Crutch Head |
| SCI200000482 | 2" F.I. x F.I. GM Stopcock BS5433 Crutch Head |



GUNMETAL PUSHFIT STOPCOCKS

With all the features listed above, the fully gunmetal pushfit joints accept multiple sizes of MDPE pipe.

Working pressure 16bar.

| CODE | PART |
|--------------|--|
| SCM020003186 | 20mm Pushfit GM Stopcock BS5433 T-Type |
| SCM032003553 | 32mm Pushfit GM Stopcock BS5433 T-Type |



PUSHFIT STOPCOCKS

With all the features listed above, the acetal pushfit joints accept multiple sizes of MDPE pipe.
Note 50mm x 50mm and 63mm x 63mm sizes feature Philmac outlets.
Working pressure 16bar.

| CODE | PART |
|--------------|--|
| SCM020002163 | 20mm Acetal Pushfit GM Stopcock BS5433 Crutch Head |
| SCM025002164 | 25mm Acetal Pushfit GM Stopcock BS5433 Crutch Head |
| SCM032002165 | 32mm Acetal Pushfit GM Stopcock BS5433 Crutch Head |
| SCI150002155 | 1½" F.I. x F.I. GM Stopcock BS5433 Crutch Head C/W 50mm Ends |
| SCI200002156 | 2" F.I. x F.I. GM Stopcock BS5433 Crutch Head C/W 63mm Ends |



COMPRESSION STOPCOCKS

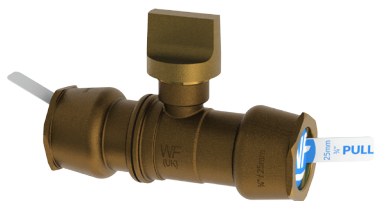
With all the features listed above, the compression joints accept multiple sizes of MDPE and LDPE pipe.
Working pressure 16bar.

| CODE | PART |
|--------------|---|
| SCM020000502 | 20mm Poly x Poly GM Stopcock BS5433 Crutch Head |
| SCM025000504 | 25mm Poly x Poly GM Stopcock BS5433 Crutch Head |
| SCM032000508 | 32mm Poly x Poly GM Stopcock BS5433 Crutch Head |



SPHERICAL VALVES

- Use a quarter turn ball mechanism to enable the mains supply to be turned off in the event of an emergency or when plumbing repairs or upgrades need to be undertaken
- Designed and manufactured for use above and below ground
- Proven, robust design with **BS EN 1982** CC491K gunmetal construction allows for a long working life in the harshest of environments
- Resistant to dezincification and can be installed with confidence even in contaminated ground
- Conform to *WIS 4-23-04*



GUNMETAL PUSHFIT SPHERICAL VALVES

The pushfit inlet and outlet joints accept MDPE pipes and with an all gunmetal design offers extra assurance that they will be long lasting.

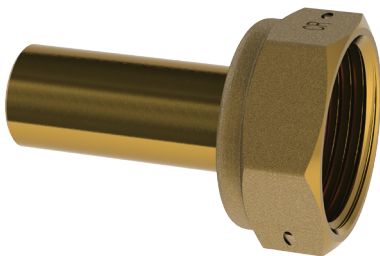
Working pressure 16bar.

| CODE | PART |
|--------------|-------------------------------------|
| SVM025003289 | 25mm Pushfit Spherical Valve T-Type |
| SVM032003290 | 32mm Pushfit Spherical Valve T-Type |



BSP THREADED / COMPRESSION FITTINGS

- Extensive range of smaller fittings in gunmetal, threaded to allow the joining together of water pipes
- Complete range of standard sizes for metric and imperial PE pipe from 20mm (½”) to 63mm (2”).



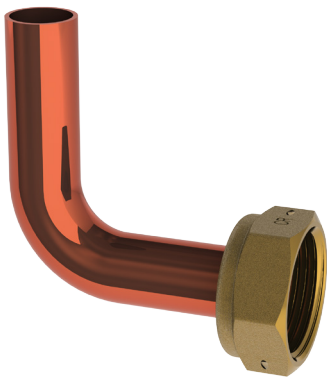
STRAIGHT UNION JOINT

Features ¾” BSP female joining nut and straight 15mm DZR tube.

Manufactured using corrosion resistant DZR brass

Working pressure 16bar.

| CODE | PART |
|--------------|---|
| MTS075003127 | Pair Of Meter Tails - Straight (¾” BSP x 50mm) c/w PTFE Washers |



90° UNION JOINT

Features ¾” BSP female joining nut and 15mm x 90° copper tube to BS 2871.

Working pressure 16bar.

| CODE | PART |
|--------------|---|
| MTE075003128 | Pair Of Meter Tails - 90 Degree (¾” BSP x 90°) c/w PTFE Washers |



POLY X THREADED ADAPTORS

FEMALE IRON ADAPTORS

Used for the connection between PE pipe and a male threaded outlet, Waterfit’s gunmetal poly x female adaptor has been an industry standard for over 50 years and as such has been proven to be the ideal solution to installer’s requirements.

MALE IRON ADAPTORS

Alternatively, a connection between PE pipe and a female threaded outlet can be made using Waterfit’s gunmetal poly x male adaptor.

| CODE | PART |
|--|---|
| ADI050000287 | GM Poly Adaptor ½" Male Iron x 20mm (½") MDPE |
| ADI075000299 | GM Poly Adaptor ¾" Male Iron x 25mm (¾") MDPE |
| ADI100000281 | GM Poly Adaptor 1" Male Iron x 32mm (1") MDPE |
| ADI150000284 | GM Poly Adaptor 1½" Male Iron x 50mm (1½") MDPE |
| ADI150000289 | GM Poly Adaptor 1½" Female Iron x 50mm (1½") MDPE |
| ADI075000300 | GM Poly Adaptor ¾" Male Iron x ¾" LDPE BS 1972/67 Class C |
| ADI075000298 | GM Poly Adaptor ¾" Female Iron x ¾" LDPE BS 1972/67 Class C |
| Other sizes available upon request - ½" (20mm) to 2" (63mm) BSP/MDPE/LDPE/HDPE | |



POLY X POLY CONNECTORS

CONNECTORS

When installations require a connection between two pipes of the same size then choose Waterfit’s range of poly connectors.

These connectors are manufactured in gunmetal and utilise compression components to make a secure connection to MDPE, LDPE, or HDPE pipe.

REDUCING CONNECTORS

As above, but for use when connection between two pipes of different sizes.

| CODE | PART |
|--|-----------------------------|
| COM020000307 | 20mm MDPE Poly Connector GM |
| COM025000308 | 25mm MDPE Poly Connector GM |
| COM032000309 | 32mm MDPE Poly Connector GM |
| COM050000310 | 50mm MDPE Poly Connector GM |
| COM063000313 | 63mm MDPE Poly Connector GM |
| Other sizes available upon request - ½" (20mm) to 2" (63mm) MDPE/LDPE/HDPE | |



THREADED AND COMPRESSION ELBOWS

THREADED ELBOWS

Used to create a 90° between BSP male iron and female threaded parts.

COMPRESSION ELBOWS

As above, but features compression fittings to allow for connection between MDPE or LDPE pipes.

| CODE | PART |
|--|--------------------------|
| ELI075000678 | ¾" F.I. x F.I. Elbow GM |
| ELI100000268 | 1" F.I. x F.I. Elbow GM |
| ELI150000674 | 1½" F.I. x F.I. Elbow GM |
| ELI075000684 | ¾" M.I. x F.I. Elbow GM |
| ELI150000680 | 1½" M.I. x F.I. Elbow GM |
| Other sizes available upon request - ½" (20mm) to 2" (63mm) BSP/MDPE/LDPE/HDPE | |



EQUAL AND REDUCING HEXAGONAL NIPPLES

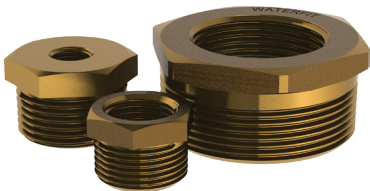
EQUAL HEXAGONAL NIPPLES

Threaded gunmetal fitting used for connection of two equal BSP female iron outlets, featuring hexagonal end for easier installation.

REDUCING HEXAGONAL NIPPLES

As above, featuring different sized outlets, used when reducing from one pipe size to another.

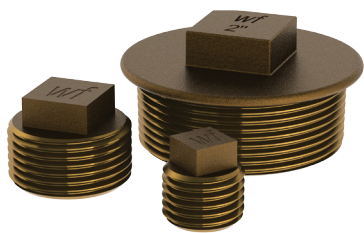
| CODE | PART |
|---|-----------------------------|
| NII075000628 | ¾" Hex Equal Nipple GM |
| NII100000622 | 1" Hex Equal Nipple GM |
| NII150000625 | 1½" Hex Equal Nipple GM |
| NII200000627 | 2" Hex Equal Nipple GM |
| NII200000632 | 2" x 1½" Reducing Nipple GM |
| Other sizes available upon request - ½" to 2" BSP | |



HEXAGONAL REDUCING BUSHES

Threaded gunmetal fitting used to reduce connection from BSP male iron to BSP female iron, featuring hexagonal end for easier installation.

| CODE | PART |
|---|----------------------|
| BUI075003671 | ¾" x ⅜" Hex Bush GM |
| BUI075000656 | ¾" x ½" Hex Bush GM |
| BUI100000637 | 1" x ¾" Hex Bush GM |
| BUI150000638 | 1½" x 1" Hex Bush GM |
| BUI150000643 | 1½" x ¾" Hex Bush GM |
| BUI150000644 | 1½" x ⅝" Hex Bush GM |
| BUI200000648 | 2" x 1" Hex Bush GM |
| BUI200000649 | 2" x 1½" Hex Bush GM |
| BUI200000652 | 2" x ¾" Hex Bush GM |
| Other sizes available upon request - ½" to 2" BSP | |



STANDARD PLUGS

Threaded gunmetal plug used to cap off connections.

| CODE | PART |
|--------------|----------------------|
| PLI050000694 | ½" Standard Plug GM |
| PLI075000696 | ¾" Standard Plug GM |
| PLI100000691 | 1" Standard Plug GM |
| PLI125000693 | ¼" Standard Plug GM |
| PLI150000692 | 1½" Standard Plug GM |
| PLI200000695 | 2" Standard Plug GM |



EQUAL AND REDUCING SOCKETS

EQUAL SOCKETS
Threaded gunmetal fitting used for connection of two equal BSP male iron outlets.

REDUCING SOCKETS
As above, featuring different sized outlets, used when reducing from one pipe size to another.

| CODE | PART |
|---|------------------------------------|
| SOI050000662 | ½" Female Equal Socket GM |
| SOI075000665 | ¾" Female Equal Socket GM |
| SOI100000658 | 1" Female Equal Socket GM |
| SOI125000661 | ¼" Female Equal Socket GM |
| SOI150000660 | 1½" Female Equal Socket GM |
| SOI200000664 | 2" Female Equal Socket GM |
| SOI075000673 | ¾" x ½" Female Reducing Socket GM |
| SOI100000667 | 1" x ¾" Female Reducing Socket GM |
| SOI125000668 | ¼" x 1" Female Reducing Socket GM |
| SOI200000672 | 2" x 1½" Female Reducing Socket GM |
| Other sizes available upon request - ½" to 2" BSP | |



EQUAL AND UNEQUAL TEES

Used to create three way connection between BSP male iron and female threaded parts, with compression option to fit MDPE and LDPE pipe.

| CODE | PART |
|--|---|
| TEM025002923 | 25mm MDPE Equal Tee GM |
| TEM032002924 | 32mm MDPE Equal Tee GM |
| TEM050000274 | 50mm MDPE Equal Tee GM |
| TEM025002919 | 25mm x 25mm x 20mm MDPE Reducing Tee GM |
| TEM032002920 | 32mm x 32mm x 20mm MDPE Reducing Tee GM |
| TEM032002921 | 32mm x 32mm x 25mm MDPE Reducing Tee GM |
| TEM050000271 | 50mm x 50mm x 20mm MDPE Reducing Tee GM |
| TEM050000272 | 50mm x 50mm x 25mm MDPE Reducing Tee GM |
| TEM050000273 | 50mm x 50mm x 32mm MDPE Reducing Tee GM |
| Other sizes available upon request - ½" (20mm) to 2" (63mm) MDPE/LDPE/HDPE/BSP | |



ANCILLARY PRODUCTS FOR GUNMETAL

Waterfit offers a number of ancillary products for use with our gunmetal range



BANJOS

Replacement banjos for use with ferrules and ferrule straps.

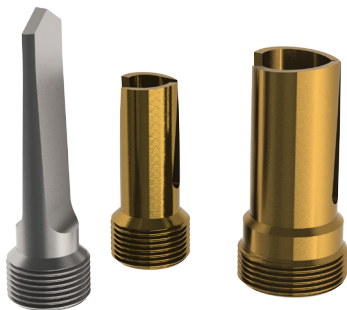
| CODE | PART |
|--------------|-----------------------------|
| SABA50004010 | 20mm Polymer Pushfit Banjo |
| SABA75004011 | 25mm Polymer Pushfit Banjo |
| SABA10004012 | 32mm Polymer Pushfit Banjo |
| SABA50002938 | 20mm Gunmetal Pushfit Banjo |
| SABA75002927 | 25mm Gunmetal Pushfit Banjo |
| SABA10002939 | 32mm Gunmetal Pushfit Banjo |
| BAI050000004 | ½" Female Iron Banjo |
| BAI075000011 | ¾" Female Iron Banjo |
| BAI100000002 | 1" Female Iron Banjo |



FERRULE KEYS

Square ended key for use with ferrules and ferrule straps, featuring an 8mm square key on one side and an 11mm square on the other, ideal for all ¾" and 1" ferrule installations.

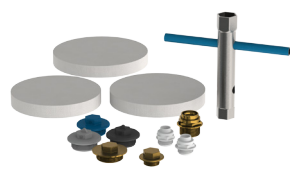
| CODE | PART |
|--------------|--------------------------|
| KEY000002509 | Double Ended Ferrule Key |



CUTTERS FOR SELF-TAPPING FERRULE STRAPS

Cutters used in our self-tapping ferrule straps for cutting through PE, PVC or AC pipe. Available in various lengths to cover a number of pipe thicknesses.

| CODE | PART |
|--------------|------------------------------------|
| CUI075003526 | ¾" PE/PVC Cutter (for up to 180mm) |
| CUI075003673 | ¾" PE/PVC Cutter (180-250mm) |
| CUI075003674 | ¾" PE/PVC Cutter (for over 250mm) |
| CUI100003675 | 1" PE/PVC Cutter (for up to 180mm) |
| CUI100003676 | 1" PE/PVC Cutter (180-250mm) |
| CUI100003677 | 1" PE/PVC Cutter (for over 250mm) |
| CUI075002116 | ¾" AC Cutter (for up to 250mm) |
| CUI075002117 | ¾" AC Cutter (for over 250mm) |
| CUI100003985 | 1" AC Cutter (for up to 250mm) |



ANCILLARY PRODUCTS FOR METERING

Waterfit offers a number of ancillary products for use with our metering range with additional products available on request.



WATER METERS

A 1½” concentric water meter is available from Waterfit. Chambers can be ordered with water meters supplied separately or pre-installed in the manifold. For more information please see ARAD's website.

| CODE | PART |
|--------------|----------------------------|
| MEI150002757 | 1½” Concentric Water Meter |



CHECK VALVES

SERVICEABLE MANIFOLDS

Check valves can be supplied on their own for servicing manifolds in situ.

FULLY CAPTIVE CHECK VALVE

The check valve is reinforced with a bush that means there is no risk of the valve coming loose into the service pipe.

FOR POLYMER MANIFOLDS

Supplied with an flat washer for sealing with our polymer manifold range.

FOR GUNMETAL MANIFOLDS AND CARRIERS

Featuring a larger flange and supplied with an O-ring for sealing with our gunmetal meter carrier and manifold range.

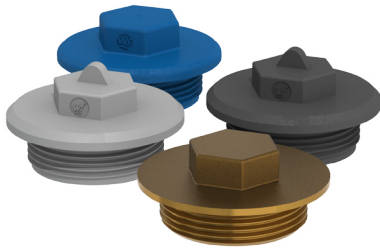
| CODE | PART |
|--------------|---|
| CHE020003521 | OV20 Check Valve Complete - Large Flange for GM Carriers |
| CHE020003522 | OV20 Check Valve Complete - Small Flange for Polymer Carriers |
| CHE032003995 | OV32 Check Valve Retainer - Large Flange for 2” GM Carriers |



CAPS FOR CHECK VALVE RECESS

For complete restriction of the water supply the CV can be replaced with a blanking cap. CW602N DZR conforming to BS EN 12164.

| CODE | PART |
|--------------|--------------------------------|
| CAI075000554 | DZR Cap For Check Valve Recess |



1½” PRESSURE CAPS

ACETAL FULL FLOW CAP

Supplied as standard with all Waterfit meter carriers, provides a normal flow through whilst waiting for a water meter to be installed.

DZR FULL FLOW CAP

DZR caps can be supplied as an alternative to the acetal full flow cap.

TRICKLE FLOW CAP

Restricts the flow of the water to provide a limited water supply.

NO-FLOW CAP

Using a washer (supplied), this cap completely shuts off supply. *Please note this is not recommended for use in accommodated dwellings.*

| CODE | PART |
|--------------|--|
| CAI150000794 | 1½” Blue Acetal Cap - Full Flow |
| CAI150000553 | 1½” DZR Cap - Full Flow |
| CAI150002508 | 1½” Grey Acetal Cap - No Flow (c/w Washer) |
| CAI150000551 | 1½” Black Acetal Cap - 1/16” Trickle Flow |



FROST PLUGS

REDUCED FREEZING RISK

Frost plugs are supplied with all complete boundary boxes supplied with tubes and are used to reduce the risk of freezing the meter carrier.

LARGE FROST PLUG

At 195mm in diameter, this plug is used with our 200mm rigid tubes.

MEDIUM FROST PLUG

At 184mm in diameter, this plug is used with our telescopic tubes.

SMALL FROST PLUG

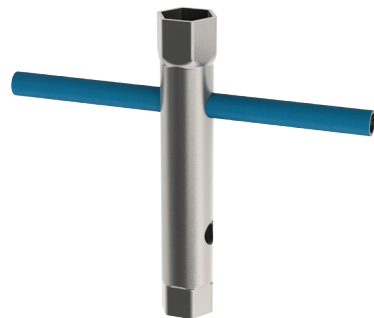
At 173mm in diameter, this plug is used with the combi lid.

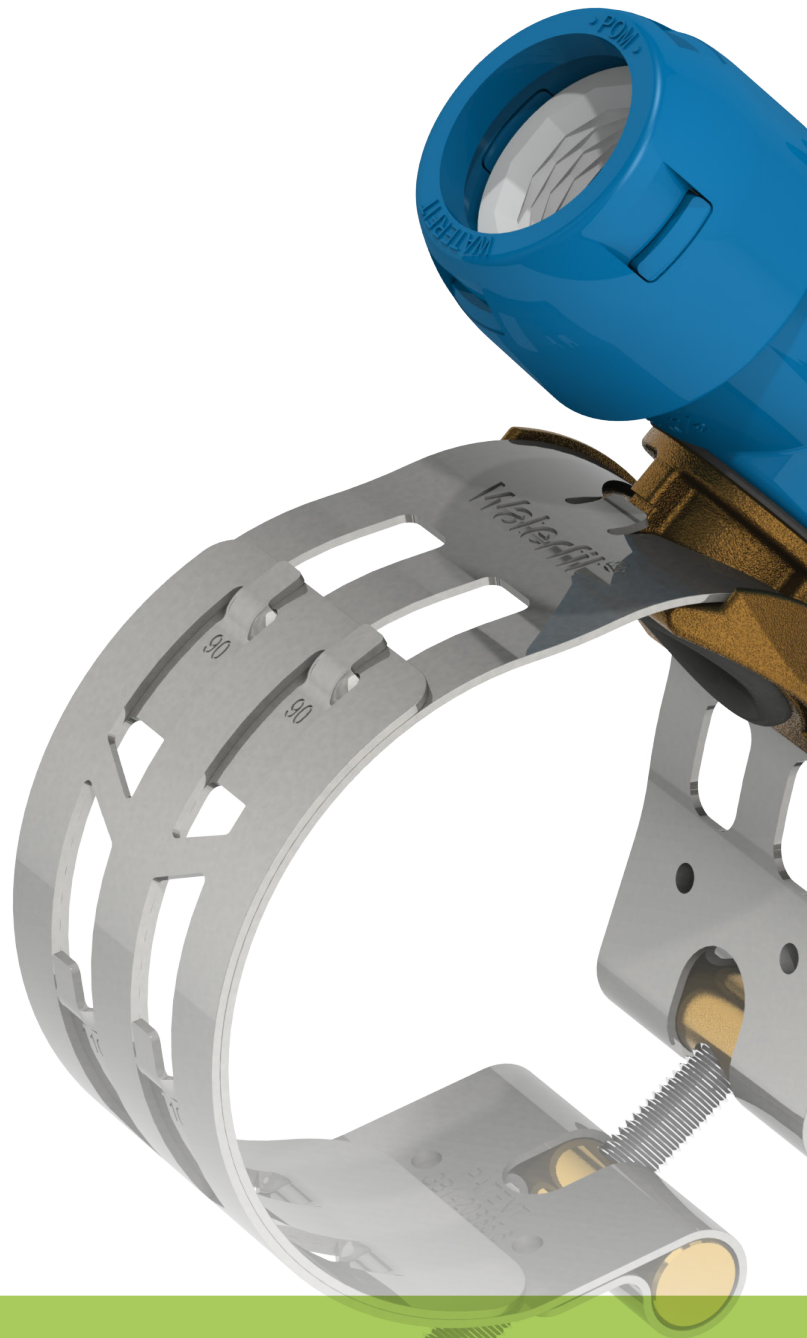
| CODE | PART |
|--------------|---|
| FPM190002489 | P.E. Frost Plug 195mm x 25mm (Large) - For 200mm Rigid Tube |
| FPM184003587 | P.E. Frost Plug 184mm x 25mm (Medium) - For Telescopic Tube |
| FPM173000918 | P.E. Frost Plug 173mm x 25mm (Small) - For Combi Lid |

CHECK VALVE AND CAP REMOVAL KEYS

Double ended keys can be provided for removal of the check valve (CV) and pressure cap.

| CODE | PART |
|--------------|---|
| SPA000000557 | Double Ended Box Spanner for CV & Pressure Cap (31mm/28mm) |





Waterfit^{WF}
A Thomas Dudley Company

Waterfit Ltd. 293 Birmingham New Road, Dudley, West Midlands DY1 4SJ
+44(0)121 520 7987 +44(0)121 522 4557 enquiries@waterfit.co.uk
www.waterfit.co.uk